



LisaTerminal allows Lisa to access central mainframes and minicomputers by emulating VT100, VT52, and TTY terminals.

LisaTerminal gives you the best of both worlds: access to the information you need from other computers, plus the convenience and cost effectiveness of

working with the information offline on Lisa. Moreover, data from the host computer can easily be integrated into LisaWrite for additional text processing and formatting.

In less than 30 minutes you'll be doing useful work with LisaTerminal. Lisa's revolutionary graphics and mouse technology

replace confusing computer commands with simple graphic images. Graphics, together with the mouse, a simple selecting device, let you create, revise, and print documents intuitively. And because basic operations work the same way in all Lisa applications, you'll learn other applications in even less time.

LisaTerminal extends the Lisa concept of integrated software to integrated systems. Never before has it been so easy to exchange information between a personal computer's application programs and a remote computer.

- Access remote information.**
- Interact with existing data bases and applications.
 - Transfer data between a main-frame or mini and Lisa.

- Communicate with a variety of computers.**
- Emulate VT100, VT52, and TTY terminals.
 - Asynchronous protocols (full and half duplex) are supported.
 - Data is transmitted and received at speeds from 50 to 19200 baud.
 - Auto-dial feature automatically calls up the remote computer.

This is a typical **LisaTerminal** screen. You can begin interacting with the remote computer simply by using the mouse to dial the computer's phone number. LisaTerminal will temporarily store everything that comes from the host, so you can review the document and search for important information.

Menu Bar All LisaTerminal functions are selected from the menu bar. To set up communications with a remote computer, just move the mouse and choose SET UP from the menu. Then select the options you want and you're ready to work.

Setup The SETUP menu lets you preselect the terminal setup options (such as baud rate and terminal selection) and formatting options (such as tab settings and column size).

Mouse/Pointer The mouse is a palm-size device that controls Lisa's cursor. It replaces all confusing special function keys and commands. The mouse is connected to Lisa by a thin cable. When you move the mouse, Lisa's pointer matches the movement on the screen.



File/Print Edit Setup Phone

Remote Computer

STOCK AAPL

DATE	BID	ASKED	CLOSE	VOL(100/S)
01/19/83	33 5/8	33 3/4		7574
01/20/83	37 1/8	37 1/4		31600
01/21/83	37 1/4	37 3/8		17973
01/24/83	35	35 1/4		14081
01/25/83	36 5/8	36 3/4		7457
01/26/83	38	38 1/8		9072
01/27/83	40 5/8	40 3/4		14658

INTER-OFFICE MEMO

To: Wayne Eilers
From: Thomas Jones
Subject: AAPL Stock Analysis

Here is the performance of AAPL stock to date:

DATE	BID	ASKED	CLOSE	VOL(100/S)
01/19/83	33 5/8	33 3/4		7574
01/20/83	37 1/8	37 1/4		31600

Quarterly Reports

Sales Reports

Desktop Manager The Desktop Manager uses graphic symbols such as these to coordinate all the system's operations. For example, to work on a document, simply use the mouse to select an existing document or create a new one. When you're finished, use the mouse to put the document into a folder. The Desktop Manager also enables you to work with more than one document at a time.

LisaWrite More than one Lisa document may be on the screen at one time. To move the contents of a LisaWrite document into a LisaWrite document, for example, simply use the mouse to select COPY from the EDIT menu. When you're ready to transfer the information into another document, select PASTE and your data is transferred—you don't even have to touch the keyboard.

Scrolling To view another part of your LisaTerminal document, simply use the mouse to move the arrows or pages in the corners of the document in the direction you want to scroll. Similarly, to stretch or contract the document, use the mouse to move the box at the bottom right-hand corner.

Edit Setup Phone

Undo Last Change

Cut

Copy

Paste

Tear OFF Lines OFF Top

Select All of Document

Use host data in other Lisa programs.

- Transfer text to LisaWrite for inclusion in reports.
- Transfer text from LisaWrite back to the mainframe.
- Store data on a disk for future use.

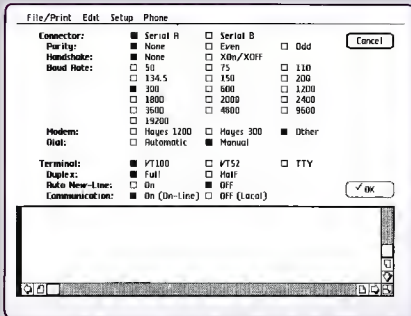
Set up the terminal options quickly.

- Use the mouse to select terminal setup options from a handy checklist in the menu bar.
- There are no binary screens to decipher—all menus are clear and concise.

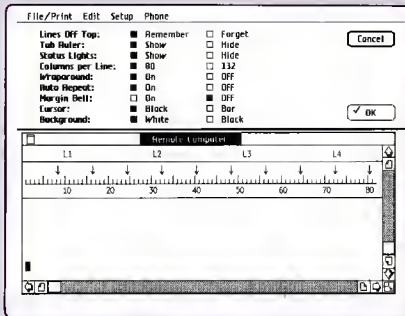
- The setup configuration is automatically stored for future use. You need to set up again only if parameters change.
- Set tabs by pointing to locations on a ruler displayed on the screen.

Connect with the host computer easily.

- Use the mouse to dial the phone number automatically.
- Create various customized documents for different remote computers.



These 32 settings and more, each with 16 levels of priority, are stored automatically for even faster setup the next time you use LisaTerminal.



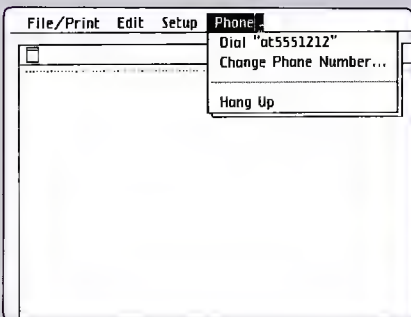
Using only the mouse, you can format each LisaTerminal document for wraparound, tabs, columns per line, and other convenience features.

Customize LisaTerminal Characteristics for the Remote Computer

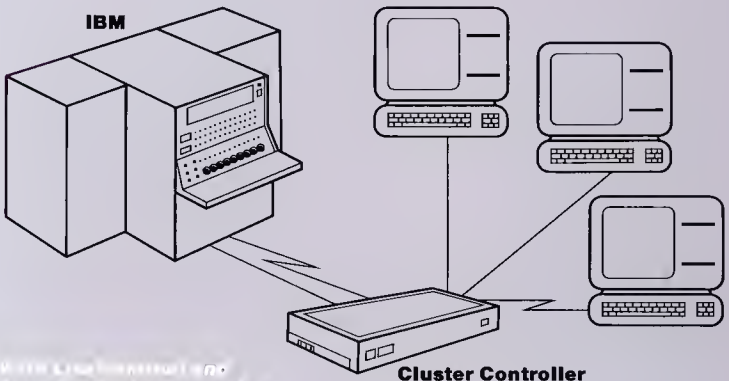
- Choose the appropriate data communication characteristics simply by using the mouse.
- Specify the type of terminal, baud rate, type of transmission, and dialing capabilities for each document.
- LisaTerminal will automatically store the characteristics you've selected.
- To communicate with different computers, simply create a document for each different remote computer. Since each LisaTerminal document may contain the phone number of a remote computer, terminal setup is as easy as selecting DIAL from the PHONE menu.

Customize LisaTerminal Documents to Your Liking

- Setting tabs and other screen characteristics is easy—just use the mouse to select the appropriate box.
- LisaTerminal's special REMEMBER feature will record everything you do with your document.



LisaTerminal will automatically store telephone numbers for fast and easy dialing from a remote computer.



With LisaTerminal and Apple's Cluster Controller Emulator, Lisa can act like an IBM 3270 display station.

Dialing the Remote Computer is Easy

- If you've already specified the phone number of a remote computer and are using our recommended modem, you can dial the computer simply by selecting DIAL from the PHONE menu—you don't have to dial the host for each setup.
- Changing the phone number is easy—just select CHANGE PHONE NUMBER from the PHONE menu, type in the new number, and DIAL again.

Communicate with IBM Computers

- LisaTerminal and Apple's Cluster Controller Emulator enable Lisa to act like an IBM 3270 display station.
- Copy and paste information between LisaWrite and the remote IBM computer.
- Reduce communication costs by linking many Lisas on the same communication line.

**Basic learning time:**

- Less than 30 minutes.

Special features:

- Status lights can be displayed on the screen.
- VT100 special function keys are available.

Set-up options:

- VT100, VT52, and TTY mode.
- Baud rate of 50, 75, 110, 134.5, 150, 200, 300, 600, 1200, 1800, 2400, 3600, 4800, 9600, or 19200. Transmit rate and receive rate set separately.
- Even, odd, or no parity checking.
- Full-duplex or half-duplex transmission mode.
- XON/XOFF.
- 80 or 132 columns.
- Manual or automatic dialing.
- Status lights on/off.
- White or black background.
- Block or bar-shape cursor.
- Auto-repeat on/off.
- Auto-new line on/off.
- Wraparound on/off.
- Answer-back message on/off.
- Margin bell.
- On-line/local.
- Serial Port A or B.

Terminal control:

- Upper-case and lower-case characters.
- Function keys (such as RETURN, TAB, ESC).
- Cursor control codes (such as NUL, ENQ, FF, DEL).
- VT52 auxiliary keypad codes.
- Special graphic character codes.

Escape sequences:

- All VT52 control sequences.
- Cursor position/position report.
- Cursor backward/forward/up/down.
- Device attributes.
- Erase in display/erase in line.
- Horizontal tabulation set/clear.
- Horizontal and vertical position.
- Index/reverse index.
- Line feed/new line mode.
- Next line.
- Reset to initial state.
- Set/reset mode.

Apple/U.S.

Apple Computer, Inc.
20525 Mariani Avenue
Cupertino, California 95014
(408) 996-1010
TLX 171-576

Apple/U.K.

Apple Computer (U.K.) Ltd.
Eastman Way
Hemel Hempstead
Herts HP2 7HO
England
011-44-442-60244
TLX 851-825834

Apple/Europe

Apple Computer International
5/7 rue de Chartres
92200 Neuilly-sur-Seine
France
011-33-1-624-21-13
TLX 842-630296

Apple/Canada

Apple Canada
875 Don Mills Road
Don Mills
Ontario, Canada M3C 1V9
(416) 444-2531
800-268-7637
TLX 06-986561